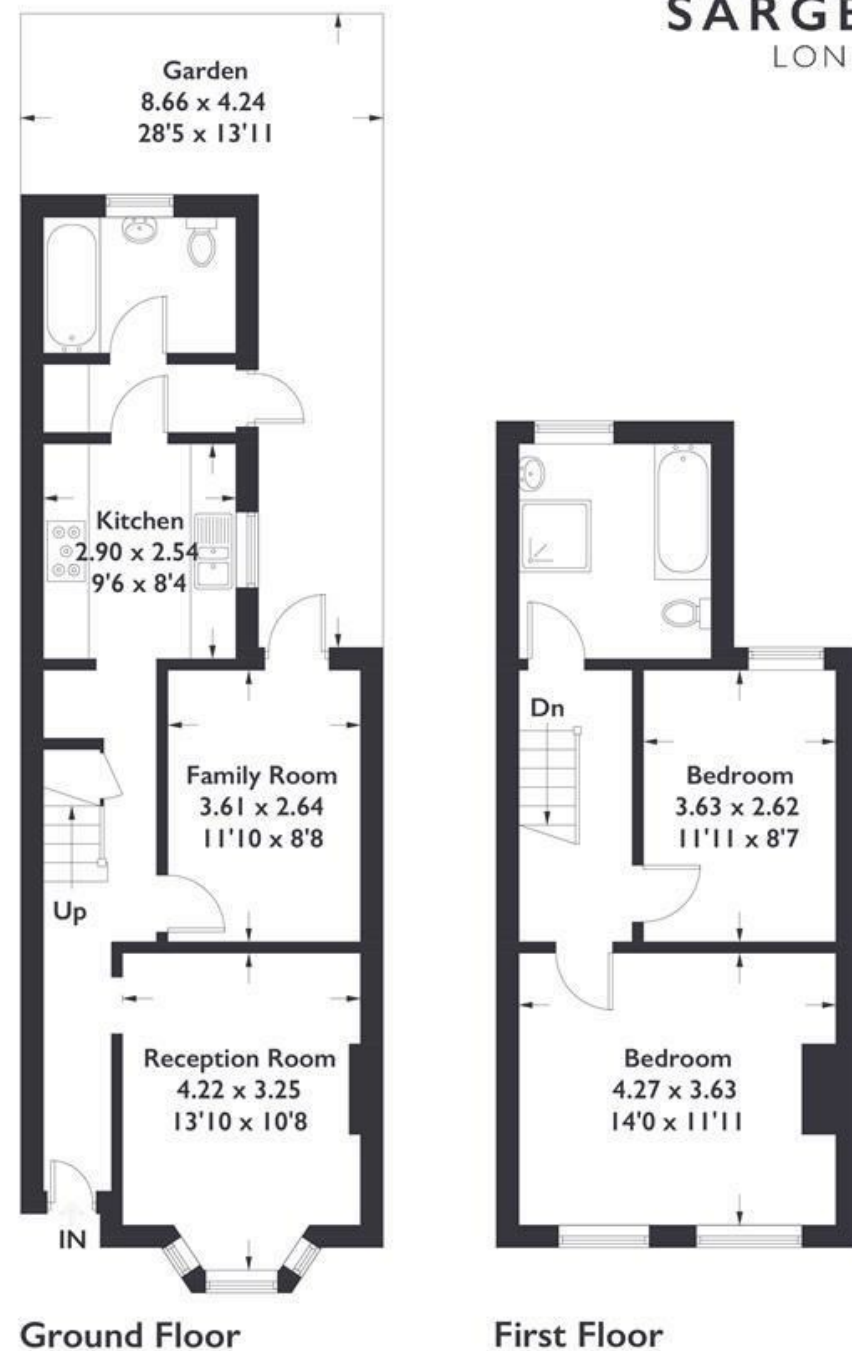


Northfield Road, W13

Approximate Gross Internal Area = 88 sq m / 948



Measured in accordance with RICS Code of Measuring Practice. To be used for identification and guidance purposes only.
Whilst every care is taken in the preparation of this plan, please check all dimensions, shapes and compass bearings before making any decisions reliant upon them.
www.london58.com © 2023 hello@london58.com



HOUSE - TERRACED

Northfield Road W13 £2,600

FEATURES

- Two Bedroom House
- Close to Transport
- Two Bathrooms
- Close to Northfield Avenue
- Private Garden
- Two Reception Rooms

HOUSE - TERRACED

Northfield Road W13

£2,600

Beautifully presented two double bedroom Victorian house situated in the heart of Northfields, just moments from Northfields Tube Station, close to Lammas and Walpole parks and within the current catchment area of Fielding Primary School.

This wonderful home has been well maintained to an excellent standard and has been tastefully decorated throughout. On the ground floor there are two large and separate reception rooms, a modern fully fitted kitchen with plenty of work space and storage plus downstairs bathroom and back door leading to the well maintained, private rear garden. On the first floor there are two double bedrooms and a modern, second contemporary bathroom with bath and separate shower.

